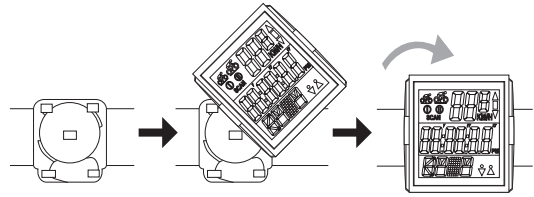


Wireless Cycle Computer- ACM-21102



How to fit the bracket



-5-

Cycle Computer-ACM-21102

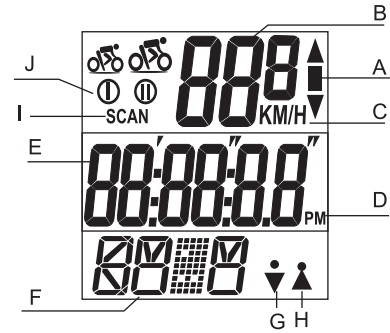
Congratulation!

You have decided for a cycle computer to help you achieve your health & wellness. It gives you the true image of your exercise work in precise way.

ACM-21102 is designed to give feedback required by the most discerning cyclists, in which is with all the functionality on one large easy to read display.

ACM-21102 is a premier cycle computer for your challenge ride. With the wireless technology, users can enjoy their cycling.

-1-



-6-

Before using **ACM-21102**, please read through the manual that guides you on how to operate it correctly & quickly.

ACM-21102 offers you very useful features to customize your exercise and gain the best & accurate measurement.

After exercise, you may view your fitness result by pressing the button. Please keep this manual for reference.



-2-

A. Average Speed Symbol if Upper/Lower Current Speed

B. Current Speed Display

C. Speed Scale Symbol Km/h or Mile/h

D. PM Indicator

E. Sub Display

F. Mode Symbol

G. Gender - Male

H. Gender - Female

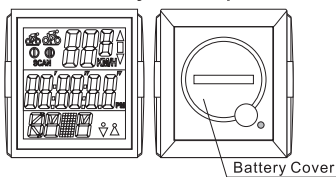
I. SCAN

J. 2 Users/wheel size setting

-7-

Main Item List

ACM-21102 Cycle Computer



Battery Cover

Rubber (1)



Rubber (2)



-3-

How to Setup Cycle Computer

1. Wheel Circumference



To get the accurate result, the wheel size should be correct. Mark the symbol on the tire and ride one circle. Then measure the length between two points that will be the circumference. Or you can get wheel circumference by the following equation:
Circumference (Ccm) = 2 x 3.14 R (inch) x 2.54 (1 inch = 2.54 cm)
R = Radius in centimeter

-8-

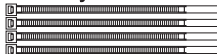
Sensor



Bracket



Nylon ties



Battery Cover



-4-

2. Installing the Bracket



Use the rubber pad (2) to tighten the bracket to the handlebar or stem.

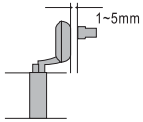
3. Installing the Speed Sensor



Check the position of the front fork to find the suitable point to attach the speed sensor. The distance between **ACM-21102** & the speed sensor would be in 600mm.

-9-

4. Installing the Magnet



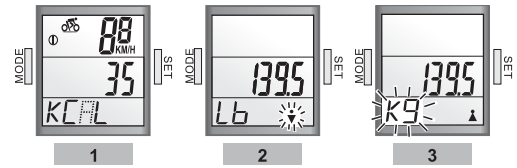
Put the Magnet on the right spokes of the front wheel and must face the speed sensor. The max distance between the speed sensor and the spoke magnet should be 5 mm. Once above items in the right position, you may go for a ride.

Note: Please check the handlebar that can be operated normally before riding your bicycle.

-10-

OPERATION PROCESS User Set

In order to get the exact exercise result, enter your personal Data (Gender/Weight Unit Switch/Weight) into computer is necessary.



● Go KCAL MODE by pressing "MODE" key, then press "SET" key for 3 secs to go User Set. By pressing "SET" key & "MODE" key alternatively to enter the correct personal data. Press "MODE" key for 3 secs when complete.

-15-

ACM-21102 Feature List

Watch Feature

Time of the Day
Stopwatch
Water Resistant
Easy to Read Large Display

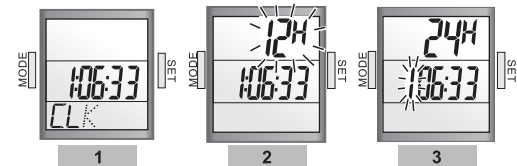
Special Feature

User Settings
Exercise Time
Cumulative Calories of the Active Exercise
User Changeable Batteries (Sensor and Receiver)
State-of-art Stylish Design

-11-

Functional Set

CLK MODE (CLOCK MODE)



● Press "SET" key for 3 secs to go setting.
● Press "SET" key shortly to adjust 12/24 hours.
● Then press "MODE" & "SET" key to adjust time (hour/min/sec). When complete, press "MODE" key for 3 secs.

-16-

Cycling Feature

Trip Distance
Intelligent & Elegant Wheel MOTION Device
Accurate Current Speed
AVG. Speed with Indicator
Max. Speed
Miles or Kms
Multi-Windows Displays
ATM (Auto Timer)
Odometer
Wireless
Motion Activity Display
2 Users/wheel size setting

-12-

TM MODE (Auto Timer Mode)



Note: Auto Timer would operate automatically when there is motion.

Note: Importantly, when press the "SET" key for 3 seconds, all exercise results in display would return to Zero, except ODO mode.

Motion activities display

When start to ride, the motion symbol will show on the display. If you work fast, the icon will act quickly.

-17-

Mode Change

● Press "M" key shortly to change mode.

CLK MODE (Clock Mode)

12/24H and Time switch

TM MODE (Timer Mode)

Current Speed

MXS MODE (Max Speed Mode)

-13-

AVS MODE (Average Speed Mode)

DST MODE (Distance Mode)

ODO MODE (Odometer Mode)

KM/H & M/H and Wheel Size (from 100 to 2999 mm) switch

KCAL MODE (K Calories Mode)

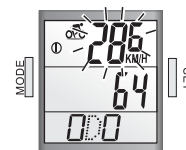
User Data (Gender/Weight Unit Kg & Lb Switch/Weight) Setting

SCAN MODE (Scan Mode)

-14-

Measure Mode

Current Speed



When the user works, the computer will show his/her current speed as shown in picture.

-18-

MXS MODE (Max Speed Mode)

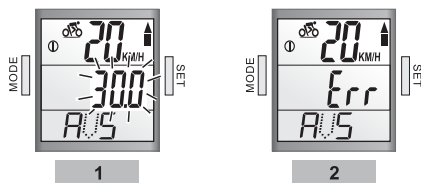
It would display user's Max Speed from the beginning to the current point.



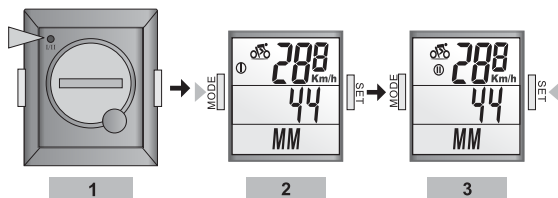
-19-

AVS MODE(Average Speed Mode)

It would display user's Average Speed from the beginning to the current point.



-20-



● In ODO Mode, you may also have 2 choices for the wheel size by pressing the (USER 1/2) on the back.

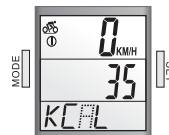
-25-

Nota: If the average speed is above/below current speed, the symbol of ⬆️/⬆️ would show up.

Nota: If your time or distance is over the max. Value(time 9 hr:59 min:59 sec) & (Distance: 999.99km), **ACM-21102** will not allow to measure correct average speed and show "Err" on the display. Once the time & distance value has been re-set, the average speed will show normally.

-21-

KCAL MODE(K Calories Mode)



● Press "MODE" key to see the record of Calories consumed from the beginning to the present point.

-26-

DST MODE(Distance Mode)

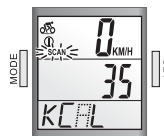
It would display user's distance from the beginning to the current point.



-22-

SCAN MODE(Scan Mode)

When in Kcal mode, press "MODE" key shortly, then the icon of scan will appear that cycle computer will automatically scan your current active result in different mode from CLK, TM, MXS, AVS, DST, ODO, to KCAL. It will automatically switch from one mode to another one every 4 seconds.

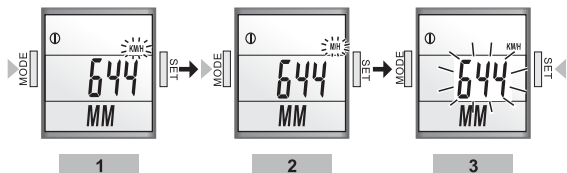


-27-

ODO MODE(Odometer Mode)

Display total odometer from the beginning to the current point.

Nota: Odometer mode will return to Zero, when battery has been taken out.



-23-

MAINTENANCE ACM-21102 cycle computer

If the display contrast changes and figures become faint, it's time to replace the computer battery. Consider changing the computer sensor and transmitter batteries at the same time. It's a good practice.

Note: Do not expose **ACM-21102** computer to extremely cold or hot temperatures i.e. don't leave your unite in direct sunlight for extended periods of the time.

Sensor

Check the position of sensor and magnet periodically. For current measurement, the sensor, magnet should not get wet/rust. Or it may cause function error.

-28-

Set the wheel size from 100mm to 2999mm

- By pressing "SET" key for 3 secs to setting mode, then press "SET" & "MODE" keys alternatively to select the switch of Km/h or Mile/h and then to choose the right wheel size. Press "MODE" for 3 secs when complete setting. For further information, please refer to wheel circumference on page 4.

-24-

Bracket/Magnet/Sensor band

The above items can be rinsed in surface fresh water or washed with a mild soap.

Battery replacement

ACM-21102 computer: Unscrew the back cover. Gently remove the battery and replace it with a new battery model CR2032, the (+) side facing up.

Sensor: Unscrew the back cover. Gently remove the battery and replace it with a new battery model CR2032, the (+) side facing up.

Note: Be careful not to over tighten and strip the casing.

-29-

TROUBLESHOOTING

1. Display is black or very light:

The battery power may be low. Try a new battery to make sure the battery is installed correctly.

2. Display becomes dark or black:

The unit is too hot. Place the unit in a shaded area, and it should return to normal.

3. The unit operates slowly or struggled:

The unit is too cold. Warm the unit, and it should return to normal.

-30-

○ The warranties contained herein are expressly in lieu of any other warranties including implied warranty of merchantability and/or fitness for purpose. In no event shall manufacturer be liable for any damages, direct or incidental, consequential or special, arising out of or related to the use of this manual or the products described herein.

○ During this warranty period (one year) the product will either be repaired or replaced without charge.

-35-

4. Data in display varies enormously:

Check your surroundings for electromagnetic or high energy interference and move away from the source of interference.

5. Data in display shows slowly

It may be affected by low temperature factor but it didn't influence the function reading. When the temperature rises, the data reading/switch will back to the normal.

6. Current speed does not appear

It may be caused by the following situation.
The distance & position between magnet and sensor to adjust.

-31-

Tire Scale	L (mm)	Tire Scale	L (mm)
14x1.50	1020	26x1.75	2020
14x1.75	1060	26x1.95	2050
16x1.50	1190	26x2.00	2060
16x1.75	1200	26x2.10	2070
18x1.50	1340	26x2.125	2070
18x1.75	1350	26x2.35	2080
20x1.75	1520	26x3.00	2170
20x1-3/8	1620	27x1	2150
22x1-3/8	1770	27x1-1/8	2160
22x1-1/2	1790	27x1-1/4	2160
24x1	1750	27x1-3/8	2170
24x3/4 Tubular	1780	650x35A	2090
24x1-1/8	1790	650x38A	2120
24x1-1/4	1910	650x38B	2110
24x1.75	1890	700x18C	2070
24x2.00	1920	700x19C	2080
24x2.125	1960	700x20C	2080
26x7/8	1920	700x23C	2100
26x1(69)	1910	700x25C	2110
26x1(65)	1950	700x28C	2140
26x1.25	1950	700x30C	2170
26x1-1/8	1900	700x32C	2160
26x1-3/8	2070	700C Tubular	2130
26x1-1/2	2100	700x35C	2170
26x1.40	2000	700x38C	2180
26x1.50	2010	700x40C	2200

-36-

SPECIFICATIONS

	Receiver	Speed Sensor
Operating Temperature	0°C ~ 40°C	0°C ~ 40°C
Storage Temperature	-10°C ~ 50°C	-10°C ~ 50°C
Emitted Frequency	N/A	122KHz ± 5%
Battery	3 volt lithium 2032 cell	3 volt lithium 2032 cell
Weight	30.6 grams	20 grams

-32-

Stopwatch Range: 0 ~ 9 (hour): 59 (minute): 59 (second)

Accuracy 1/100 seconds

Time Range: 0 ~ 9 (hour): 59 (minute): 59 (second)

Current Speed Range: 0 ~ 99.9KM/0 ~ 62 Mile

Average Speed Range: 0 ~ 99.9KM/0 ~ 62 Mile

Maximum Speed Range: 0 ~ 99.9KM/0 ~ 62 Mile

(Trip)Distance Range: 0 ~ 999.99KM/0 ~ 600 Mile

Odometer Range: 0 ~ 9999.9KM/0 ~ 6200 Mile

Calories Used Range: 9999 Kcal

-33-

LIMITED WARRANTY

This product is for one year limited warranty commencing on the date of purchase. The product will be free from defects in material and workmanship for one year from the date of purchase.

○ Warranty does not cover the batteries, damages due to misuse, abuse or accidents, cracked or broken cases, negligence of precautions, improper maintenance or commercial use.

○ Warranty is void if the repairs are done by non authorized service technician.

-34-