



ACOR ACORPLUS

No.18, 8th Rd., Taichung Ind. Park, Taichung City, 407 Taiwan
Tel:+886-4-2359-1201 Fax:+886-4-2359-1562
Email:acor@acorsports.com.tw www.acorsports.com



All about you
Create my own style
Our promise to you
Reach your dreams

2018 **PRODUCT COLLECTION**

ACOR - ALL CYCLING OFF/ON ROAD

The brand ACOR which comes from the word "Acorn" which symbolizes patience. There's a saying that goes "Great oaks from little acorns grow". This is ACOR spirit. ACOR is proud to be recognized internationally on manufacturing, product innovation through technology. ACOR is flexible and able to respond demand quickly in changing market.

With information research and R & D support in manufacturing technologies and processes, ACOR provides wide range of bicycle components and accessories. Combining CNC processing and apply to aluminum and titanium material, it makes ACOR products more than functional but variability. And all our products must meet EN standards.

With decades of efforts, now ACOR distributes to worldwide over 20 countries, it is you make this happened. The industry and market never stop to change. The only thing we should do is keeping innovation and creating value. We grow with the times and expect to give you the best.

CONTENTS

TITANIUM



FRAMES / BOTTLE CAGES / SEAT CLAMPS / BELLS
SPACERS / HANDLEBARS / STEMS / SEAT POSTS

01



ACOR BICYCLE PARTS
BOTTOM BRACKETS / BRAKES & ADAPTERS
BRAKE LEVERS / BRAKE SHOES / BRAKE PADS
BARENDS / CHAINS / CABLES
CLAMPS & QUICK RELEASES / DISC ROTORS / END PLUGS
GRIPS / HANDLEBARS / HANDLEBAR TAPES
PEDALS / SEATPOSTS & ACCESSORIES
STEMS / SPACERS & TOP CAPS

07



ACOR ACCESSORIES
BAGS / BIKE PROTECTOR CASTER / BASKETS
BIKE HOLDERS / BELLS / BOTTLE CAGES / CHAIN GUIDES
FENDERS / LIGHTS / DERAILLEUR PULLEYS / KICKSTANDS
PUMPS & CARRIERS / PROTECTORS / TOOLS

26



ACOR PLUS CARBON PARTS
BOTTLE CAGE / FORKS / HANDLEBARS / STEMS
SEATPOSTS / WHEELSETS

45

Why Titanium

In Japan, titanium is called dream metal and it is applied in aerospace in untied state since WWII. Titanium is a kind of light metal and some-one say it will be the future metal with newly structure and performance. With light, high strength, good springy and anti-corrosion advantages, Titanium is recognized an ideal material for high end and life style bicycles. A titanium frame offer a perfect performance and meet the market need of individuals.

Due to the strength and stiffness, titanium is the best choice of making a bike frame. There's only half weight but 28.4% higher strength and stiffness than steel. Also the titanium frame gives excellent performance of anti-fatigue, and with lighter, stronger, long lifespan owing to its high strength and low density. There's no need to do painting on the surface as titanium frame is anti-corrosion, it just need do metal wiredrawing keeping its metal color.

GEOMETRY BOOST TUBING QUALITY

A perfect titanium frame is decided by tubing quality and geometry design. We have to precisely control each details of shaped tube, size, weight, function and stiffness. ACORti titanium serves this the only purpose.



AEROSPACE GRADE TITANIUM

ACORti titanium use aerospace grade titanium which is high quality Ti3AL/2.5V titanium alloy and apply in tubing with innovated technique. We also select 6AL/4V titanium alloy in our higher end models for the perfect riding experience.

TITANIUM

ACOR Titanium - Innovate to change

Like most metals, titanium is combined with alloy elements to make it stronger and outstanding properties. Ti 3AL/2.5V (3% Aluminum, 2.5% Vanadium and 94.5% Titanium) is specifically created to make high strength tubing. The manufacturing process of titanium tubing which is applied in ACORti follows strict quality standard, the same standard used on the national aerospace. And using strict cold-worked process to shape the tubes and enhance stiffness. We are have many shape tubes for your options to customize frames.

At ACORti, we take the design, manufacture and material selection very seriously, all the details make a perfect hand-craft frame with forever lasting. Each titanium frame is a piece of artwork.

Without experience technician a perfect frame can't not be created, its technician's master piece and you complete the honor.

ACORti advantages

BUTTED WALL THICKNESS CONTROL

We create different wall thickness within a same tube to response each type of bikes. It can improve riding experience, lighten frame weight and give the comprehensive properties of frames. ACORti can make double butted, plain gauge, triple butted tubes based on frames. Besides, we can do tubes with different shapes such as drops, oval, taper etc.

COLD-WORED ENHANCE HARDNESS

Different from alloy tubing hot-worked, ACORti titanium using cold-worked permanent deformation to enhance the hardness and fatigue bear of tubes. Even though this technique will spend more time and effort but we insist this is must to-do. There's nothing more important than high quality frame we offer to you.



FRAMES

T-M021

Spec: Ti 3AL2.5V 27.5" Plus Mountain Bike Frame
 1-1/8"-1-1/2" head tube
 SHIMANO BB92 Press-Fit bottom bracket
 SHIMANO E-thru I type (12x148mm axle)
Weight: 1850g / 15.5"



SHIMANO E-thru I type



T-M019

Spec: Ti 3AL2.5V 27.5" Plus Mountain Bike Frame
 DB oval top tube & PG oval down tube
 1-1/8" to 1.5" Integrated head tube
 SHIMANO E-thru I type (12x148mm axle)
 PM disc mount SHIMANO Direct Mount hanger
 FD for SHIMANO side swing
 SHIMANO BB92 Press-Fit bottom bracket
Weight: 1850g / 19"



SHIMANO E-thru I type



T-M020

27.5" is available

Spec: Ti 3AL2.5V 29ER Mountain Bike Frame
 Mechanical & SHIMANO Di2 system
 Drip / plum blossom shaped top tube
 PG oval down tube, tapered square chain / seat stay
 Ti 6AL4V head tube, dropout and disc mount
 1-1/8" to 1.5" Internal head tube
 SHIMANO E-thru system (12x142mm axle)
 PM disc mount, SHIMANO Direct Mount hanger
 FD for SHIMANO band type side swing
 SHIMANO BB92 Press-Fit type bottom bracket
Weight: 1800g / 16.5"



SHIMANO E-thru



T-R015

Spec: Ti 3AL2.5V 700C Road Bike Frame
 1-1/8"-1-1/2" head tube
 Mechanical & SHIMANO Di2 system
 SHIMANO BB86.5 Press-Fit bottom bracket
Weight: 1500g / 50cm



T-R016

Spec: Ti 3AL2.5V 700C Road Bike Frame
 1-1/8"-1-1/2" head tube
 Mechanical & SHIMANO Di2 system
 SHIMANO BB86.5 Press-Fit bottom bracket
 SHIMANO flat mount disc system
 SHIMANO E-thru for road (12x142mm axle)
Weight: 1650g / 50cm



SHIMANO Flat mount disc & E-thru



T-R003

Spec: Ti 3AL2.5V Road Bike Frame
 DB oval top tube & DB two-sided oval down tube
 1-1/8" semi-integrated head tube
 CNC dropout not replaceable hanger
Weight: 1245g / 52cm



T-R005

Spec: Ti 3AL2.5V Road Bike Frame
 Deformed pentagon shaped top & down tube
 1-1/8" conventional head tube
Weight: 1418g / 49cm



T-R013

Spec: Ti 3AL2.5V 700C Gravel Bike Frame
 Mechanical & SHIMANO Di2 system
 DB oval top tube & PG oval down tube
 Ti 6AL4V head tube, dropout and flat mount
 1-1/8" to 1.5" internal head tube
 SHIMANO E-thru system (12x142mm axle)
 SHIMANO Flat Mount disc system
 SHIMANO BB86.5 Press-Fit bottom bracket
 With fender & carrier eyelets
Weight: 1700g / 54cm



SHIMANO E-thru & Flat mount disc



T-R014

Spec: Ti 3AL2.5V 700C Road Bike Frame
 Mechanical & SHIMANO Di2 system
 Deformed top tube & PG oval down tube
 1-1/8" to 1.5" Internal head tube
 Replaceable hanger OLD 130mm
 Caliper brake system
 With fender & carrier eyelets
Weight: 1620g / 48cm



SEAT CLAMPS

T-CLP01

Spec: Ti 6AL4V investment casting seat clamp
Straight cut & slotted design
M5 stainless bolts
Size: 31.8 / 34.9 x H12mm
Weight: 20g (31.8mm)



T-CLP02

Spec: Ti 6AL4V investment casting seat clamp
Aslope cut & slotted design
M6 stainless bolts
Size: 31.8 / 34.9 x H12mm
Weight: 22g (31.8mm)



STEMS

T-STM01

Spec: Ti 3AL2.5V body
Ti 6AL4V investment casting faceplate
M5 stainless bolts
Angle: $\pm 7^\circ$
Size: 28.6 x 70 / 80 / 90 / 100 / 110 / 120mm
Barbore: 25.4mm / 31.8mm, H:43mm
Weight: 142g (100mm)



T-STM07

Spec: Ti 3AL2.5V body
Ti 6AL4V investment casting faceplate
M5 stainless bolts
Angle: $\pm 7^\circ$
Size: 28.6 x 70 / 80 / 90 / 100 / 110 / 120mm
Barbore: 31.8mm, H:43mm
Weight: 142g (100mm)



BELLS

T-BE03

Spec: Ti 3AL2.5V Bell
Size: 32mm for 22.2mm handle bar
Weight: 29g



SPACERS

T-SPAC

Spec: Ti 3AL2.5V Spacer
Size: 28.6 x 5 / 10 / 15 / 20mm
Weight: 2g



T-STM08

Spec: Ti 3AL2.5V body
Ti 6AL4V investment casting faceplate
M5 stainless bolts
Angle: $\pm 7^\circ$
Size: 28.6 x 70 / 80 / 90 / 100 / 110 / 120mm
Barbore: 31.8mm, H:43mm
Weight: 145g (100mm)



SEAT POSTS

T-SEP04

Spec: Ti 3AL2.5V Seat Post
AL6061 rail M5 stainless bolts
Size: 27.2 / 31.6 x 350mm
Offset: 0mm
Rail options: Anod.Black,Silver,Red,Blue
Weight: 231g (27.2 x 350mm)



HANDLEBARS

T-HB01

T-HB02

Spec: Ti 3AL2.5V Handle Bar
Width: 580 / 600 / 620mm
Barbore: 25.4mm / 31.8mm
Rise: 0mm
Backsweep: 5°
Weight: 126g (25.4mm)



T-SEP06

Spec: Ti 3AL2.5V Seat Post
AL6061 rails, easily angle adjustment
Size: 27.2 / 30.9 / 31.6 x 350mm
Offset: 15 / 25mm
Rail options: Matt Black,Silver,Red,Blue,Gold,Green,Pink
Weight: 310g (30.8x350mm)



BOTTOM BRACKETS

ABB-2101

Spec: Square tapered bottom bracket
Alloy cups sealed bearing
Thread 1.37" x 24T alloy cups
Size: 68 x 107 / 110 / 113 / 115 / 118 / 122.5 / 124 / 127.5mm
73 x 110 / 113 / 118 / 122.5 / 124 / 127.5mm
Weight: 276g



ABB-21501

Spec: External bottom bracket Shimano system
2 sealed bearings
Compatible spindle 24mm
Size: For shell 68mm & 73mm
Weight: 103g



ABB-21701

Spec: External bottom bracket sealed bearings for fat bike
Size: For shell 100 / 120 x OLD:170mm or
100 / 120 x OLD:190mm
Weight: 118g



ABB-21702

Spec: Press fit bottom bracket PF30 type
Nylon adapters sealed bearings
Compatible Shimano spindle 24mm crankset
Size: For shell 68 / 73mm
Weight: 110g



ABB-21703

Spec: Press fit bottom bracket PF30 type
Nylon adapters sealed bearings
Compatible Sram spindle 24 / 22mm crankset
Size: For shell 68 & 73mm
Weight: 115g



ABB-21706

Spec: Press fit BB bottom bracket PF30 type
Nylon adapters sealed bearings
Compatible spindle 30mm crankset
Size: For shell 68 & 73mm
Weight: 74g



ABB-21704

Spec: Press fit bottom bracket Shimano BB92 type
Nylon adapters sealed bearings
Compatible Shimano spindle 24mm crankset
Size: For shell 86.5 & 89.5 & 92mm
Weight: 73g



ABB-21705

Spec: Press fit bottom bracket Shimano BB92 type
Nylon adapters sealed bearings
Compatible Sram spindle 24/22mm crankset
Size: For shell 86.5 & 89.5 & 92mm
Weight: 74g



ABB-21003

Spec: Full sealed bearing for BB30 type bottom bracket
2pcs-set
Weight: 44g



ABR-21801

Spec: Hydraulic Flat Mount disc brake
Front and Rear a set
Dual piston system
CNC / forged aluminium
Semi metallic pads
Includes Front adapter & bolts
Supplied with rotors 160mm x 2pcs
Weight: 296g / pr



ABR-21802

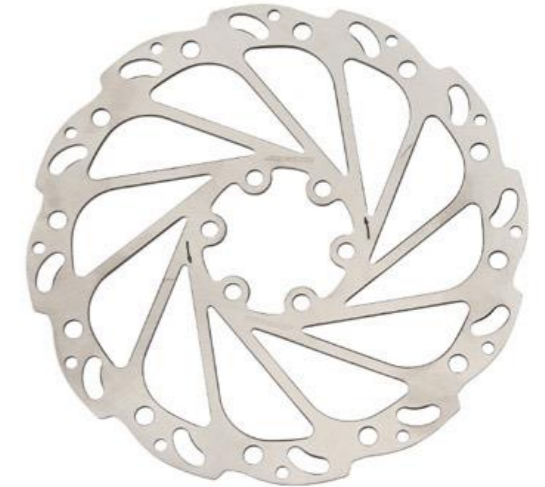
Spec: Alumium Flat mount adapter
Includes bolts
Size: For front roter 160mm
Weight: 70g



BRAKES & ADAPTERS

Hydraulic Disc Brake set

- > Hybrid front and rear hydraulic disc brake.
- > Non-corrosive and high stability mineral oil.
- > No need to bleed oil again after hide the wire into frame.
- > Suitable for any brake lever and shifter system
- > Dual-Piston, easy to adjust the position of rotor.
- > The lightest model at the market.
- > Braking performance is smoother and safer.
- > Never worry about brake system to hurt cabon wheel.



ABR-21803

Spec: Alumium Flat mount adapter
Includes bolts for flat mount thickness 20&30mm
Size: For rear roter 160m
Weight: 80g



ABR-21504

Spec: Cable Actuated Hydralulic Road Disc Brake
Front and rear a set
Dual piston system
CNC / forged aluminium
Semi metallic pads
Includes adapters and bolts
Supplied with rotors 160mm x 2pcs
Weight: 284g / pr



ABR-21105

Spec: Alloy forged arm V-brake
Dual linear spring tension adjuster
Size: 108mm with EN 70mm brake pads
Weight: 194g / wheel



ABR-2209

Spec: Alloy forged caliper barke with normal pads
Power reinforcement with dual-pivot device
Size: 53-73mm
Weight: 184g / wheel



ABR-21501

Spec: Disc adapter for Shimano center lock system
Fit 6 bolt standard discs
Size: For 12 & 15 & 20mm thru axle
Weight: 27g / pc



ABR-21506

Spec: Disc adapter for Shimano center lock system
Fit 6 bolt standard discs
Size: For 9mm QR & 12mm thru axle
Weight: 24g / pc



ABR-21503

Spec: AL6061 post mount disc brake adapter
PM caliper to fit PM fork/frame
Size: Adapter for 140mm to 160mm disc
Adapter for 160mm to 180mm disc
Weight: 11g w/o bolt



ABR-21701

Spec: AL6061 post mount disc brake adapter
PM caliper to fit PM fork/frame
Size: Adapter for 140 to 160mm / 160 to 180mm disc
Adapter for 160mm to 203mm disc
Weight: 8g



ABR-2210

Spec: ST anti rust angle pipe
Size: 90 / 110D 2pc-set
Weight: 8g



ABR-901

Spec: Free angle adjustable lead pipe
For v-brake stainless steel 2pc-set
Weight: 6g



BRAKE LEVERS

ABL-21401

Spec: Ergonomic design and Top Mount lever
Alloy cold forged with hinged style clamp lever for Cyclocross
Size: OD 24.0 / 26.0 / 31.8 mm
Weight: 93g / pr



ABL-21403

Spec: Ergonomic alloy brake lever with KRATON
Integrated bell on left design alloy forged 4F lever
For Linear pull brake
Size: 22.2mm handlebar
Weight: 233g / pr



ABL-21502

Spec: Alloy melt-forged 4 finger lever for V-brake
Weight: 239g / pr



ABL-21504

Spec: Alloy adjusting barrels for brake lever
Size: M10 2pcs / set
Weight: 6g / pc



BRAKE SHOES

ABS-208

Spec: Rubber multi-condition for ultra alloy rim
2prs-set
Size: 50mm
Weight: 94g / pr



ABS-2804

Spec: Groove design V-brake compatible
2prs-set
Size: 72mm
Weight: 60g / pr



ABS-801C

Spec: Canti-brake shoes 2prs-set
Weight: 58g / pr



ABS-801V

Spec: V-brake shoes 2prs-set
Size: 72mm
Weight: 67g / pr



ABS-21503

Spec: Extra light road brake shoes 2prs-set
Size: Length 55mm
Weight: 69g / set



ABS-21505

Spec: Clear rubber compound V-brake shoes
For BMX bikes
2prs / set
Size: Length 72mm
Weight: 123g / set



ABS-21505C

Spec: Clear rubber compound V-brake shoes
For BMX bikes
With colorful bolts set
Size: Length 72mm
Weight: 123g / set



ABS-21506

Spec: Extra light brake pads for Carbon rim
Exclusive holes superior heat dissipation
2prs / set
Size: Length 55mm
Weight: 20g / set



ABS-21507

Spec: Full CNC machined extra-light brake shoes
High-friction coefficient compound
2prs-set
Size: Length 55mm
Weight: 62g / set



BRAKE PADS

ABS-21701

Spec: Replacement brake shoe for CARBON rims
Can fit shimano direct mount caliper brake
2prs-set
Size: 55mm
Weight: 18g / set



ABS-2101

Spec: Kevlar composite disc brake pads 2pcs-set
Size: HOPE, MAGURA, SHIMANO, FORMULA, HAYES etc.
Weight: 33g / pr



ABS-21702

Spec: Replacement brake shoe for ALLOY rims
Can fit shimano direct mount caliper brake
2prs-set
Size: 55mm
Weight: 21g / set



ABS-2101

Spec: Metal composite disc brake pads 2pcs-set
Size: HOPE, MAGURA, SHIMANO, FORMULA, HAYES etc.
Weight: 33g / pr



BARENDS

ABZ-2903

Spec: AL6061-T6 Triathlon aero bar
Length and angle adjustable
Arm holder position adjustable
With comfort EVA patches
For 31.8mm plus shims for 26.0 & 25.4 handlebar
Size: L345 x 31.8mm
Weight: 590g / set



ABZ-21203

Spec: AL6061 Comfortable 3D forged & full CNC bar end
Option: A. normal end caps
B. conical end caps.
Size: L80 x 22.2mm
Weight: 56g / pr



ABZ-21102

Spec: AL6061 Comfortable 3D forged bar end
Size: L100 / L120 x 22.2mm
Weight: 130g / pr -- 100mm



ABZ-21204

Spec: AL6061 ultra comfortable bar end
Size: Drop 117 x 22.2mm
Weight: 126g / pr



ABZ-21601

Spec: AL6061/PP/TPR Ergonomic bar end
Size: L80 x 22.2mm
Weight: 137g



CHAINS

ACA-21504

Spec: Reusable(propose five times) quick lock link for chain
It's innovated design of chain connector
Have two safe sections to precisely locked
Compatible with SHIMANO, Campagnolo and SRAM chain
Replace a new one when you change new chain
Even this is reusable
Weight: 2g
A: For 11 SPD chain
B: For 10 SPD chain
C: For 9 SPD chain
D: For 7 or 8 SPD chain



ACA-21505

Spec: Reusable(roughly 5 times) quick lock link for chain
It's innovated design of chain connector
Have two safe sections to precisely locked
Compatible with SHIMANO, Campagnolo and SRAM chain
Replace a new one when you change new chain
Even this is reusable
Weight: 2g
A: For 10 SPD chain
B: For 9 SPD chain
C: For 7 or 8 SPD chain
D: For single SPD chain
E: For 11 SPD chain

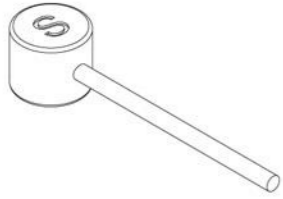


ACA-21506

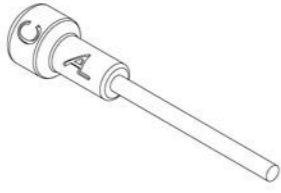
Spec: Irreusable quick fix connecting pin
Chromium carbide treatment
Compatible with SHIMANO, Campagnolo and SRAM chain
Weight: 2g
A: For 11 SPD chain
B: For 10 SPD chain
C: For 9 SPD chain



INNER CABLE (Available workshop box 100pcs)



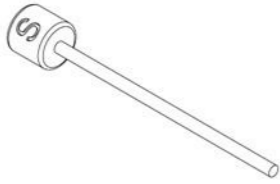
Universal®
Mountain Brake
7 x 6 mm



Campagnolo®
Road Brake
5.5 x 11.5 mm



Shimano® / SRAM®
Road Brake
6 x 11 mm



Shimano® / SRAM®
Shift
4.4 x 4.4 mm



Campagnolo®
Shift
3.9 x 5 mm

ACB-21403

Spec: Stainless steel slick brake cable for Road
Size: 19 strand, OD:1.5 x L2000mm, 5.5 x 11.5mm nipple
Suitable for Campagnolo system

ACB-21404

Spec: Stainless steel brake cable
Size: 9 strand, OD:1.5 x L2000mm, 6 x 11mm nipple
Suitable for Shimano system

ACB-21406

Spec: Stainless steel slick shift cable
Size: 19 strand, OD:1.1 x L2000mm, 3.9 x 5mm nipple
Suitable for Campagnolo system

ACB-21407

Spec: Stainless steel slick shift cable
Size: 19 strand, OD:1.1 x L2000mm, 4.4 x 4.4mm nipple
Suitable for Shimano system

ACB-21405

Spec: Stainless steel brake cable for MTB
Size: Size: 19 strand, OD:1.5 x L2000mm, 7 x 6mm nipple

OUTER CASING

ACB-2402

Spec: M5 brake outer casing silver mesh outer layer
Size: 30M / box

ACB-2412

ditto D69OD:4.5mm for shift



ACB-2403

Spec: M5 outer casing for both brake & shift inner cables
Kevlar fiber layer ligh for superb performance
Especially for cable-actuated disc brakes
Size: 30M / box



ACB-21507

Spec: 4mm SP shift outer casing
Polymer lined for reduced friction
Size: 30M / box



ACB-21506

Spec: 4mm SP shift outer casing
11 SPD compattiable
Size: 30M / box



ACB-21508

Spec: 5mm 2P brake outer casing
Polymer lined for reduced friction
Size: 30M / box



ACCESSORIES

ACB-21201

Spec: Alloy cable O-RING protector 6pcs/set
3pcs for brake & 3pcs for shift
Size: 1.2mm for shift / 1.8mm for brake
Weight: 6g / set



ACB-21401

Spec: Alloy C-Clip for hydraulic hose
Size: Ø10.5mm x 5pcs-set
Weight: 2g / set



ACB-2102

Spec: Plastic injection cable holder with 3M sticker
Sticks to the fork or frame
Size: Ø4 and Ø5mm cable housing compatible
Weight: 1g



ATL-21203

Spec: Alloy cable hanger for Canti brake
Include cable wire and cable end
Weight: 20g / set



CLAMPS & QUICK RELEASES

AQR-2305

Spec: AL6061 NC machined seat clamp
Size: 28.6 / 29.8 / 31.8 / 34.9mm
Weight: 26g



AQR-2502

Spec: AL6061 forged seat clamp with carrier bosses
 M5 thread for rear carrier
Size: 31.8 or 34.9mm
Weight: 37g



AQR-2705

Spec: AL6061 seat clamp with carrier bosses
 M5 thread for rear carrier
Size: 28.6 / 31.8 / 34.9mm
Weight: 35g



AQR-21501

Spec: Super light AL6066 CNC made seat clamp
 Oval hole design good for carbon frame
Size: 31.8 / 34.9mm x H14mm
Weight: 18g (34.9mm)



AQR-21209

Spec: AL6061 forged QR lever seat clamp
Size: 31.8 or 34.9mm
Weight: 48g (31.8mm)



AQR-21504

Spec: AL6061 extrusion CNC machined QR lever seat clamp
Size: 31.8 / 34.9mm
Weight: 44g (34.9mm)



AQR-501

Spec: Quick release set fixed with Allen key
 Corrosion resistant springs
Size: F:110 / 115mm hub
 R:145 / 148 / 151mm hub
Weight: 80g / 2pcs set
 --- ditto 3pcs-set is available for F & R hubs & seat tube 30mm
Weight: 80g / 3pcs set



DISC ROTORS

ABR-21402

Spec: Flourish durable stainless steel CNC machined disc rotor
 OD1.8T / 44PCD spades shape
Size: 203mm / 180mm / 160mm
Weight: 145g (203mm)



ABR-21106

Spec: Multi color Disc brake bolt
Size: T25 M5 x 10mm --12pcs / bag
Weight: 24g / bag
 --- Available bottle package



END PLUGS

ABZ-602E

Spec: ACOR Plastic end plugs
Size: For handlebar type
Weight: 2g / prs



ASG-21612

Spec: Aluminum / Rubber end plugs
 Cap diameter:30.5mm
Size: Body diameter 13/15/18mm
Weight: 47g / pr (18mm)



ASG-21613

Spec: Aluminum / Rubber end plugs
 Cap diameter:25.5mm
Size: Body diameter 13/15/18mm
Weight: 38g / pr (18mm)



ASG-2510

Spec: ACOR CARBON looking end plugs
Size: For handlebar type
Weight: 6g / prs



ASG-2511

Spec: ACOR CARBON looking end plugs
Size: For Road bar type
Weight: 6g / prs



GRIPS

ASG-2905

Spec: Kraton/GEL rubber grips
With ACOR logo end plugs
Size: 7/8" x 125mm
Weight: 100g / pr



ASG-2906

Spec: Ergonomic Kraton/GEL grips
Designed to absorb shock
With ACOR logo end plugs
Size: 7/8" x 125mm
Weight: 158g / pr



ASG-21507

Spec: GEL/Silicon grips with locking system
With end plugs
Size: 7/8" x 129mm
Weight: 130g / pr



ASG-2809

Spec: Choloprene high density foamed grips
With ACOR logo end plugs
Size: 7/8" x 125mm
Weight: 41g / pr



ASG-21103

Spec: Kraton/GEL/PP grips with classical pattern design
With ACOR logo end plugs
Size: 7/8" x 134.5mm
Weight: 150g / pr



ASG-21304

Spec: Anti-slip Rubber/GEL grips
With ACOR logo end plugs
Size: 7/8" x 128mm
Weight: 190g / pr



ASG-21502

Spec: EVA foam closed end grips
Size: 130mm
Weight: 31g / pr



ASG-2806

Spec: Comfortable Kraton grips with locking system
With end caps
Size: 7/8" x 128mm
Weight: 101g / pr



ASG-21201

Spec: Skull design PP grips with locking system
With end plugs
Size: 7/8" x 128mm
Weight: 119g / pr



ASG-21607

Spec: Anti-slip silicone foam grips
Shock-absorb & abrasion-resist
With ACOR logo end plugs
Size: 130mm
Weight: 55g / pr



ASG-21601

Spec: Ergonomic Kraton/PU grips with locking system
With end plugs
Size: 7/8" x 128mm or 138mm
Weight: 182g / pr-128mm



ASG-21603

Spec: 2 color segment Kraton/Rubber grips with locking system
With end plugs
Size: 7/8" x 128mm
Weight: 125g / pr



ASG-21610

Spec: EVA/Silicone NANO foam grips
With ACOR logo end plugs
Size: 130mm
Weight: 11g / pr



ASG-2104

Spec: Multibar foam grips fit on butterfly bars
Suitable for Ø 19-22mm handlebar diameters
Can be cut to length individually
Size: 500mm length
Weight: 82g / pr



HANDLEBARS

AHB-21801

Spec: Compact Alloy double-butted road bar
Width: 400 / 420 / 440mm
Reach: 80mm
Drop: 125mm
Barbore: 31.8mm
Weight: 330g (420mm)



AHB-21802

Spec: AL6061 double-butted road bar
Width: 400 / 420 / 440mm
Reach: 84mm
Drop: 131mm
Barbore: 31.8mm
Weight: 292g (440mm)



AHB-2201

Spec: AL6061 DB low rise MTB handlebar
Back sweep: 9°
Width: 640 / 660 / 680mm
Rise: 30mm
Barbore: 25.4mm
Weight: 340g
--- ditto Back sweep: 6°
Width: 640 / 660 / 680mm
Rise: 30mm
Barbore: 31.8mm



AHB-21503

Spec: AL6061 DB rise handlebar
Width: 700 / 710 / 720 / 730 / 740 / 750mm
Barbore: 35mm
Rise: 20mm
Backsweep: 9°
Upsweep: 4°
Weight: 347g (W750mm)



AHB-21701

Spec: AL6061 DB top flat handlebar
Width: 690 / 700 / 710 / 720 / 730 / 740mm
Barbore: 31.8mm
Rise: 0mm
Backsweep: 9°
Weight: 256g (W720mm)



AHB-21704

Spec: AL6061 DB road bar
Width: 360 / 370 / 380 / 390 / 400 / 410 / 420 / 430 / 440mm (C-C)
Barbore: 31.8mm
Drop: 135mm
Reach: 80mm
Weight: 278g (W380mm)



AHB-21702

Spec: AL6061 flared drop road bar
Width: 440 / 480mm
Barbore: 31.8mm
Drop: 110mm
Reach: 76mm
Flared: 21°
Weight: 320g (W480mm)



AHB-21703

Spec: AL6061 flared drop road bar
Width: 420/460mm
Barbore: 31.8mm
Drop: 110mm
Reach: 80mm
Flared: 26°
Weight: 290g (W420mm)



AHB-2711

Spec: Extend computer bar AL6061 CNC machined clamp
 With carbon extension bar 22.2mm
Size: Fit to handlebar 31.8mm
Weight: 54g



HANDLEBAR TAPES

ASG-21203

Spec: Brush effect with EVA cork bar tape
 Comfortable designed with end caps
Size: 3 x 185cm
Weight: 55g / pr



ASG-2404

Spec: Bar tape comfort enhanced EVA foam / soft GEL
 Water resistance with end caps
Size: 3 x 185cm
Weight: 36g / pr



ASG-21504

Spec: PU/EVA foamed bar tape with oblique line surface
 With ACOR CARBON LOOKING end caps
Size: 3 x 200cm
Weight: 70g / pr (w/o end caps)



ASG-21506

Spec: PU/EVA foamed bar tape STAR LOOKING surface
 With ACOR CARBON LOOKING end caps
Size: 3 x 200cm
Weight: 56g / pr (w/o end caps)



ASG-21608

Spec: 3 lines pinholes PU+EVA bar tape shock-proof
With ACOR carbon looking end caps
Size: 3 x 200cm
Weight: 55g / pr



ASG-21605

Spec: Full silicone bar tape with ACOR carbon looking end caps
Size: 3 x 200cm
Weight: 196g / pr



ASG-21611

Spec: Microfiber+3M REFLECTIVE bar tape with end caps
Size: 3 x 200cm
Weight: 80g / pr



APD-21603

Spec: Alloy body / cage light pedal
With BS reflectors
9/16" Cr-Mo axle sealed bearings
Size: 98 x 65 x 21mm
Weight: 240g / pr



APD-21602

Spec: Nylon fiber Freeride / MTB pedal
With BS reflectors
9/16" Cr-Mo axle ball bearings
Size: 100 x 110 x 21mm
Weight: 310g / pr



PEDALS

APD-21006

Spec: Multi-function alloy body / cage pedal
1-side binding tension adjustable
9/16" Cr-Moly axle with sealed bearings
Size: 93 x 66 x 30.1 mm
Weight: 354g / pr



APD-21105

Spec: 1-piece CNC alloy pedal
With BS reflectors
9/16" Cr-Moly axle sealed bearings
Size: 98 x 63 x 23 mm
Weight: 250g / pr



APD-21601

Spec: Alloy extruded CNC pedal
9/16" Cr-Mo axle sealed bearings
Replaceable anti-slip pins
Size: 87 x 98.5 x 22.5mm
Weight: 228g / pr



APD-21406

Spec: Composite body / alloy cage pedal
With BS reflectors
9/16" Cr-Moly axle ball bearings
Size: 104 x 63.2 x 24 mm
Weight: 240g / pr



APD-2502

Spec: Alloy body / cage pedal
Serrated pattern top anchors the shoe firmly
With BS reflectors, toe clip compatible
9/16" Cr-Moly axle with ball bearings
Weight: 249g / pr



APD-21507

Spec: AL6061 CNC-machined pedal
9/16" Cr-Moly axle
LSL bushing & sealed bearings
Replaceable anti-slip pins
Size: 100 x 97mm
Weight: 384g / pr



APD-21408

Spec: Pedal pins 45pcs / bottle with tool
Size: M4 / T20
Weight: 69g (with bottle)



SEATPOSTS & ACCESSORIES

ASP-2305

Spec: Alloy suspension seatpost 1-bolt head design
Preload adjustable, travel: 40mm
Size: 25.4 to 27.2 x 350mm
Offset: 20mm
Weight: 470g
Option: Oversize up to 31.8mm



ASP-2001

Spec: AL6061 cold-forged seatpost 1-bolt head design
Size: 25.0 to 27.2 x 400mm
Offset: 15mm
Weight: 280g
Option: Oversize up to 31.8mm



ASP-21601

Spec: AL6061 one piece forged seatpost
Micro-Angle adjustable
Size: 27.2 or 31.6 x 350mm
Offset: 15mm
Weight: 294g (31.6mm)



ASP-21602

Spec: AL6061 simply angle adjustment seatpost
Size: 27.2 or 31.6 x 350mm
Offset: 0mm
Weight: 257g (31.6mm)



ATL-21601

Spec: SHIMANO Di2 seat post battery fixation L: 68mm
TPR material, fits for ALLOY seat post
Size: For 27.2 or 31.6mm seat post
Weight: 14g (27.2mm)



ATL-21602

Spec: SHIMANO Di2 seat post battery fixation L: 68mm
TPR material, fits for CARBON seat post
Size: For 27.2 or 31.6mm seat post
Weight: 14g (27.2mm)



AQR-2101

Spec: Alloy seatpost shim L:90mm
Size: ID25.4 or 27.2mm
OD options fit most sizes seatposts
Weight: 36g



STEMS

ASM-2607

Spec: Alloy melt-forged angle adjustable stem
Steerer: 28.6mm
Barbore: 25.4mm x H40mm
Angle: 0° to +60°
Length: 90 / 100 / 110 / 130mm
Weight: 307g (110mm)



ASM-2703

Spec: AL6061 ultra light 3D forged stem
Steerer: 28.6mm
Barbore: 25.4 / 31.8mm x H40mm
Angle: +/- 7°
Length: 90 / 100 / 110 / 120mm
Weight: 119g (90mm)



ASM-21702

Spec: AL6061 3D forged stem
Steerer: 28.6mm
Barbore: 31.8mm x H40mm
Angle: +/- 17°
Length: 50 / 60 / 70 / 80 / 90mm
Weight: 123g (90mm)



ASM-21704

Spec: AL6061 3D forged stem
Steerer: 28.6mm
Barbore: 31.8mm x H40mm
Angle: +/- 10°
Length: 70 / 80 / 90 / 100 / 110 / 120mm
Weight: 120g (90mm)



ASM-21701

Spec: AL6061 3D forged stem
Steerer: 28.6mm
Barbore: 35mm x H40mm
Angle: +/- 7°
Length: 45 / 60 / 70 / 80 / 90mm
Weight: 123g (90mm)

Also available: Barbore: 31.8mm x H40mm
Length: 40 / 50 / 60 / 70 / 80 / 90 / 100 / 110mm



ASM-21703

Spec: AL6061 3D forged stem
Steerer: 28.6mm
Barbore: 35mm x H40mm
Angle: 0°
Length: 45 / 60mm
Weight: 131g (45mm)

Also available: Barbore: 31.8mm x H40mm
Length: 45 / 60mm



SPACERS & TOP CAPS

ASM-2710

Spec: Alloy spacer super light design 3pcs-set
Size: 28.6 x 3 / 5 / 10mm or 5 / 10 / 15mm
Weight: 1g (5mm), 3g (10mm)
 --- Each size 100pcs per bag available



ASM-2711

Spec: Carbon spacer super light design 3pcs-set
Size: 28.6 x 3 / 5 / 10mm
Weight: 1g (5mm), 2g (10mm)
 --- Each size 100pcs per bag available



ASM-21404

Spec: Alloy CNC design spacer 4pcs-set
Size: 28.6 x 3 / 5 / 8 / 10mm
Weight: 2g (5mm)
 --- Available in Red,Black,Blue,Silver,Gold



ASM-2319

Spec: Alloy forged lock type stem adapter
 With spacers and top cap
Size: 28.6 x L117mm
Weight: 215g



ASM-2810

Spec: AL6061 T6 barbore adapter 4pcs-set
Size: OD 31.8 / ID 25.4mm
 OD 31.8 / ID 26.0mm
Weight: 21g / set



ASM-21501

Spec: AL6061 2-step designed top cap
 For carbon steerer tube
Size: 1-1/8" x ID22-23mm / 23-24mm / 24-25mm
Weight: 41g (22-23mm)



ASM-21203

Spec: AL6061 T6 CNC top cap with star nut & bolt
Size: 1" or 1-1/8"
Weight: 20g / pc



BAGS

ABG-21001

Spec: Nylon bag for sun glasses with holding lock
Weight: 32g
 --- ditto Neoprene material



ABG-2704

Spec: Saddle bag water resistance 1680D Polyester PU coated
 Safety 3M reflector and green webbing trimming
 Expandable gusset designed
Size: 105 x 170 x 90 / 150mm -- L
Weight: 192g
 -- ditto 90 x 139 x 80 / 130mm -- S
Weight: 162g



ABG-2705

Spec: Saddle bag water resistance 1680D Polyester PU coated
 Safety 3M reflector and green webbing trimming
Size: 82 x 124 x 63mm
Weight: 123g



ABG-2706

Spec: Saddle bag water resistance 1680D Polyester with EVA inner
 Safety 3M reflector trimming and green webbing trimming
Size: 107 x 142 x 75mm
Weight: 138g



ABG-2707

Spec: Saddle bag water resistance 1680D Polyester PU coated
 Safety 3M reflector trimming and green webbing trimming
Size: 94 x 185 x 102mm -- L
Weight: 137g
 --- ditto 75 x 175 x 90mm -- S
Weight: 112g



ABG-21208

Spec: ABS+TPU saddle bag 2-SIDE pocket expanded design with
 ANTI-WATER zip
Size: 185 x 190 x 130 mm
Weight: 366g



BIKE PROTECTOR CASTER

ABP-2701

Spec: ECO-Bike protector for travel convenience
Re-use & durable design
Max. loading : 30kg
Size: 1150mm x 810mm x 305mm x 5mm
Weight: 3,300g



ABP-21201

--- ditto size: 1055mm x 735mm x 230mm x 5mm
Weight: 2,300g

ABP-21101

Spec: ECO-Trolley wheels for travel convenience
Re-use, quick release, 360° rotatable rollers
Single wheel Max strength: 297kg
Velcro Max strength: 80kg
Size: 2sets of 250cm Velcro straps with 4 trolley wheels
Weight: 935g / set



ABG-21109

Spec: 600D/PU bag for ABP-2701 bike protector
Size: 120 x 34 x 81.5 cm

ABG-21211

Spec: 600D/PU bag for ABP-21201 bike protector
Size: 106 x 23 x 74 cm



BASKETS

ABK-21501

Spec: P.E. willow & rattan weave front basket
With QR and handle with grip
Size: 34 x 27 x 18 / 20 cm
Weight: 1334g



ABK-21502

Spec: P.E. willow & rattan weave front basket
With QR and handle with grip
Size: 37 x 25 x 23.5 cm / 6mm P.E
Weight: 1232g



ABK-21302

Spec: P.E. willow & rattan weave rear basket
Quick release design
Size: W400 x D300 x H200mm
Weight: 1320g



ABK-21303

Spec: Alloy rear basket with quick release design
Size: W400 x D300 x H170 / 135mm
Weight: 1190g



BIKE HOLDERS

AWS-2503

Spec: Hi-Ten L type bike stand with anti-scratch protector
Size: Fitted for 24" & 26" bikes
Weight: 2344g



AWS-21402

Spec: Hi-Ten L type bike stand with anti-scratch protectors
Size: Fitted for 29" & 700C
Weight: 2455g



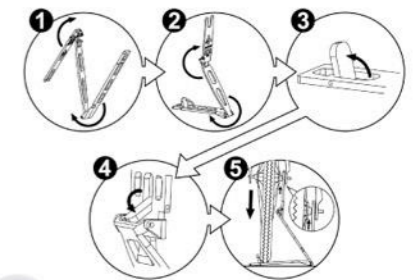
AWS-2701

Spec: Folding maintenance bike stand
Hollowed ST tubing fixed rear hub type
Fits bikes with or without a rear derailleur
Compatible with a range of wheel size 26~29"
Weight: 757g



AWS-2801

Spec: AL6061 T6 plate 3-PC folding type bike stand
Anti-rust fitting kits anti-scrub rubber protector
Neoprene carry bag
Folded size: L245 x W64 x H25mm
Unfold size: L245 x W64 x H270mm
Size: Fitted for 26", 28", 700C bikes
Weight: 450g



ATW-2401

Spec: Stabilizer wheels
UPC coated steel stays
5" plastic wheel and rim
Size: Adjustable height for 12"-20" bikes
Weight: 652g



ABE-21801

Spec: Loud and clear brass bell
 Brass dome with steel base & lever
 Dome size Ø55mm
 Size: 22.2mm & 25.4mm
 Weight: 86g



ABE-21303

Spec: Animal pattern bell
 Size: 55mm for 22.2mm handlebar
 Weight: 50g



ABE-2101

Spec: Alloy cap with cartoon picture knocking bell
 Size: For 22mm handle bar
 Weight: 20g
 --- ditto 20pcs per box



ABE-2201

Spec: Ladybug style knocking bell with plastic wings
 Size: For 22mm handlebar
 Weight: 32g



ABE-2802

Spec: Football style knocking bell alloy cap plastic clamp
 Size: For 22.2mm handlebar
 Weight: 29g



ABE-2401

Spec: Knocking bell alloy cap plastic clamp with ergonomic lever
 Size: For 22mm handlebar
 Weight: 26g



ABE-2904

Spec: Glitter bell 6 colorful LED cap
 Size: 43mm for 22.2mm handlebar
 Weight: 60g
 --- ditto Mixed blue*6 and pink*6 per box



ABE-21101

Spec: Yo Yo bell special cap plastic bracket easy adjustable strap
 Size: For 22.2 - 31.8mm handlebar
 Weight: 25g



ABE-2807

Spec: Mini knocking bell with detachable and flexible tie
 Size: For 22 to 31.8mm handlebar
 Weight: 22g



ABE-21501

Spec: Ding Dong bell steel top cap & clamp
 Size: 55mm for 22.2mm handle bar
 Weight: 89g



A Silver color

B White wallpaper style

C Rose style

D Cartoons flower style

E Peony style

F Black wallpaper style

BOTTLE CAGES

ABC-21304

Spec: Plastic bottle cage TPE design for micro adjustable
 Size: Max.bottle dia. 76mm
 Weight: 26g
 --- ditto Painted color available



ABC-21405

Spec: Plastic painted color bottle cage
 Size: Max.bottle dia. 76mm
 Weight: 30g
 --- ditto plastic injection color available



ABC-21504
 Spec: Plastic side open bottle cage
 Weight: 42g



ABC-2901
 Spec: Nylon fiber bottle cage
 Size: Durable for bottle with wide diameter
 Weight: 37g



ABC-2001N
 Spec: Alloy bottle cage with 6mm tubing & plastic plugs
 Size: Max. bottle dia. 76mm
 Weight: 63g



ABC-21501
 Spec: Alloy ultra light water bottle cage 1.2mm thickness
 With rubber part makes cage more extension
 With non-film sticker decal
 Weight: 31g



ABC-21502
 Spec: Alloy water bottle cage without welding construction
 Special design taking the bottles from right and left side direction
 Weight: 43g



ABC-21505
 Spec: Alloy bottle cage with TPE macro adjustable
 Weight: 22g



ABC-21206
 Spec: Alloy bottle cage adapter for handlebar
 Size: For 22.2 - 25.4mm handlebar
 Weight: 39g



ABC-21207
 Spec: Alloy bottle cage adapter for handlebar
 Size: For 25.4 - 31.8mm handlebar
 Weight: 40g



ABC-21107
 Spec: Alloy bottle cage adapter assemble with saddle rail
 Weight: 122g



ABC-2801
 Spec: Resin bottle cage bracket
 Rotatable for handlebar
 Stainless steel clip
 Size: S -- for tube dia. 19.0 - 22.4mm
 M -- for tube dia. 22.4 - 27mm
 L -- for tube dia. 28.6 - 31.8mm
 Weight: 34g



ABC-21407
 Spec: AL6061 T6 CNC bolts for bottle cage
 Size: M5 x 15mm -- 4pcs / set
 Weight: 4g / set



ABC-21408
 Spec: AL7075 bolts for bottle cage
 Size: M5 x 15mm -- 4pcs / set
 Weight: 4g / set



CHAIN GUIDES

ACC-21501
 Spec: AL6061 -T6 chain keeper with plastic upper guard
 For MTB 1 x 9 or 1 x 10 drive train
 Size: 34.9mm with adapter to 31.8mm
 Weight: 49g / set



ACC-21502
 Spec: AL6061 -T6 chain keeper with CH-EX plastic upper guard
 For MTB 1 x 9 or 1 x 10 drive train
 Size: 34.9mm with adapter to 31.8mm
 Weight: 85g / set



ACC-21001
 Spec: Tension for changing chain to single speed
 Size: C-C: 51 for 16 - 18T (common spec)
 Weight: 122g / set (16 - 18T)
 --- ditto C-C: 34 for 12 - 14T
 Weight: 117g / set



ACC-2602
 Spec: PC injection chain guard
 Crank to chainring distance 6 to 16mm
 Size: 42 & 44T
 Weight: 82g
 --- ditto 46 & 48T
 Weight: 90g



DERAILLEUR PULLEYS

ARO-601
 Spec: Alloy derailleur pulleys 2pcs set
 Sealed cartridge bearings
 Size: 10T compatible with 7 or 8 speed
 Weight: 27g / set



ARO-2501
 --- ditto 11T compatible with 9-10 speed
 Weight: 31g / set



FENDERS

AFD-21202

Spec: F & R PP injection fender set
For assemble with fork blades and rear seat stay
Front with 3M reflector
Rear options: ECO RED LED w/1*CR2032 battery
or 3M reflector
Light continuously approx. 160 hrs
Size: 20" to 700C bikes for tire 1.25"-1.75"
Weight: 108g / set



AFD-21202A

--- ditto QR system fits seat post, with tool-free adjustable angle
Weight: 194g / set



AFD-21801

Spec: PP QR design front & rear fenders
Front to fit Ø18.5-34.5mm inner head tube
Length adjustable. 3 position rear bridge to fit up 29" wheel
(30mm adjusting range, 15mm for each position)
Size: F 585 x 95mm, R 530 x 100mm
Weight: 520g (F&R)



AFD-21003

Spec: F & R PP injection fender set
Fits all regular forks and suspension forks
with brace fender hole
Tool-free adjustable angle
Size: 24" or 26" MTB bikes
Weight: 403g / set



AFD-2403

Spec: PP injection MTB front downtube fender
Can be mounted with screws to frames with fender eyes
Velcro strap attachment
Weight: 77g



AFD-21701

Spec: Alloy F & R fender stainless steel stays
F: single R: V-type
Size: 700C x W50mm
Weight: 640g / set



AFD-2503

Spec: F & R PC injection Q/R 700C fender set
For assemble with fork blades and rear seat stays
Stainless stays and anit-rust bolts
Width option: 35 / 45 / 50 / 55mm
Weight: 407g / set



KICKSTANDS

AKS-21801

Spec: Alloy center kickstand adjustable length
With top caps and bolts
Size: for 20"-29" bikes
Weight: 190g



AKS-21403

Spec: Alloy double leg center kickstand
Tool-free length adjustable with QR design
Fitted on chain stay neck with top plate
Size: For 26"-29" bikes
Weight: 468g



AKS-21410

Spec: Alloy adjustable center kickstand
Fitted on chain stay neck
With steel bolt & steel top plate
Size: For 24"-28" bikes
Weight: 252g
To replace AKS-2403



AKS-2802

Spec: Alloy rear kickstand
360° rotatory and height
adjustable top bracket
Size: For 24"-28" bikes
Weight: 286g



AKS-2001

Spec: Alloy rear wide angle type kickstand
Length adjustable
Size: For 24"-28" bikes
Weight: 339g



AKS-21201

Spec: Alloy rear kickstand easy fixed with 3 screws
Length adjustable
Fits on 45° to 65° of different dia. of
seat stay and chain stay
Size: For 24"-28" bikes
Weight: 354g



AKS-21407

Spec: Alloy rear kickstand fit to various dimension tubes
Tool-free length adjustable with QR design
Size: For 24"-29" bikes
Weight: 320g



AKS-21409

Spec: Alloy rear kickstand
Tool-free length adjustable with
QR design
Size: For 24"-29" bikes
Weight: 376g



AKS-21501

Spec: Alloy adjustable rear kickstand
Add install position at the dropout
With original QR
Size: For 26"-29" bikes
Weight: 181g



LIGHTS

ALT-21601F

Spec: Safety front light in aluminum case water resistant
0.5W white LED, 2 modes function
With strap & CR2032*2 batteries easy to install
Flashing(90hrs)/Constant(30hrs)
Weight: 32g / with batteries



ALT-21601R

Spec: Safety rear light in aluminum case water resistant
0.12W red LED, 2 modes function
With strap & CR2032*2 batteries easy to install
Flashing(120hrs)/Constant(60hrs)
Weight: 32g / with batteries



ALT-21602

Spec: USB rechargeable front light in aluminum case water resistant
3W Hi-Power white LED, 4 modes function
Lithium-ion polymer battery included cable free charging
With bracket & strap easy to install
Light output can reach 150 Lumens
Super Bright(2hrs)/Boost(4hrs)/Constant(9hrs)/Flashing(18hrs)
Weight: 52g



ALT-21701

Spec: USB rechargeable super bright rear light water resistant
16 chips COB red LED 5 modes function
Lithium-ion polymer battery included USB cable & strap
Can fit round and aero style seatposts, seatstays and forks
Hi-Beam(1.5hrs)/Low-Beam(6hrs)/Flashing 1(24hrs)/
Flashing 2(27hrs)/Pulsating(4hrs)
Weight: 31g



ALT-21702

Spec: USB rechargeable front light water resistant
1 white LED 4 modes function
Lithium-ion polymer battery included bracket & strap
Cable free charging, can be clipped on waistband or bag
Hi-Beam(2hrs)/Low-Beam(8hrs)/Flashing(48hrs)/Pulsating(10hrs)
Weight: 14.5g



PUMPS & CARRIERS

AMP-21801

Spec: Steel floor pump with stable base
Steel barrel and stamping base
Clever-Twin valve for Schrader, Presta,
Donlop 2.5" gauge, Max. pressure 160psi
Weight: 1.6 kgs



AMP-21401

Spec: Full alloy high polish floor pump
Max. pressure 240psi
With clever twin valve fits Presta & Schrader
Size 2.5" gauge, 640mm
Weight: 1210g



AMP-21501

Spec: High pressure floor pump
Alum barrel / Die-casting alum base /
wooden handle With clever twin valve
fits Presta & Schrader
Dunlop and E/V, Max. pressure 240 psi
Size: 2.5" gauge, 26" in total height
Weight: 1330g



AMP-2602

Spec: Floor pump with mid mounted gauge
Resin barrel / alloy body
With clever twin valve fits Presta & Schrader
Size 605mm
Weight: 798g



AMP-21503

Spec: CNC mini pump with Aluminum handle / barrel
With extractable hose, screw-in clever valve, dust cap
Fit for Presta and Schrader
Max. pressure 120 psi
Weight: 130g



AMP-21505

Spec: 2 in 1 CO2 mini pump innovative pump head design
Which combines of dual function for one side mini pump inflating
And one side CO2 cartridge inflating with dust cap
Divided inside air-flow channel for more security
Fit 16 grams CO2 cartridge / Presta & Schrader
Alum barrel / handle / valve cap on both side valve
Weight: 143g



AMP-21504

Spec: Shock mini pump with gauge
Foldable hose, attached with Presta adaptor
Max. pressure 300 psi, 2-3 PSI micro adjust button
Double function for inflating suspension shock and tyre
Weight: 246g



AMP-21405

Spec: CO2 16 grams threaded cartridges
2pcs per pack
Weight: 44g / pc



AQR-21403

Spec: AL6061 CO2 cartridge and inflator carrier
Carry two CO2 cartridge compatible 12g / 16g / 25g
Size: For seat post OD27.2 / 30.9 / 31.8mm
Weight: 34g (31.8mm)



ACR-21401

Spec: Multifunctional rear adapter fixed saddle rail
For CO2 cartridge x 2, inflator x 1,
water bottle x 2, inner tube x 1
With 34cm Velcro strap
Weight: 178g



PROTECTORS

AOS-21002

Spec: Neoprene chain stay protector
With slipless back & Velcro fastening
Size: 280 x 80 x 100mm
Weight: 19g



AOS-21201

Spec: PU chain stay protector with Velcro fastening
Size: 260 x 90 / 110mm
Weight: 24g



AOS-21601

Spec: PU chain stay protector thickness: 1.2mm
Matt carbon looking microfiber sheet
3M adhesive strip
Size: 260 x 27 x 20mm
Weight: 5g



AOS-21602

Spec: Silicone chain stay protector thickness: 1mm
3M adhesive strip
Size: 260 x 27 x 20mm
Weight: 5g



AOS-21401

Spec: Plastic chain stay protector
3M adhesive strip
Size: 225mm
Weight: 8g



AOS-21203

Spec: Alloy valve cap for both Presta & Schrader
Weight: 3.5g / pr



AOS-21205

Spec: Alloy bullet shape valve cap for both Presta & Schrader
Weight: 3.5g / pr



TOOLS

ATL-21801

Spec: Nylon fiber 2 in 1 tire lever
With bottle opener design
Size: 3pcs / set
Weight: 34g / set



ATL-21802

Spec: Chain hook and wear indicator tool
Hardened steel
Integrated chain hook holds links during assembly
and chain wear indicator provides precise chain
measurement for maintenance
Weight: 38g



ATL-2701

Spec: Adhesive puncture repair kit
Size: 12pcs 25mm round patches, 1pc sand paper
Weight: 6g / box



ATL-21206

Spec: Glueless puncture repair kit
Size: 2pcs nylon tire lever
6pcs 25mm glueless patches
1pcs 4cm marker pen
1pc 3 x 7cm sand paper
Weight: 40g (within 10 x 15cm box)



ATL-2602

Spec: Fluorescent trouser bands
Size: Minimum diameter 80mm
Weight: 20g / pr



ATL-21803

Spec: Dust cap wrench suit for shimano system
Magetically mounted
For 8 internal splines of the crak arm dust cap
Weight: 13g



ATL-21205

Spec: Puncture Repair kit
Size: 2pcs 24 x 35mm oval patches,
4pcs 25mm round tube patches
2pcs 2cm valve tubing
1pc 7cc rubber cement
1pc round metal buffer
Weight: 26g (within 10 x 12cm box)



ATL-21107

Spec: Hydraulic brake bleeding kit
Includes 2 x 50ml syringes and transparent plastic hoses
Different threaded connection fittings to suit different brake
system Magura, Hayes, Avid, Hope, Formula
Size: 190 x 133 x 65mm
Weight: 383g



ATL-2603

Spec: ABS injection 3M reflector trouser bands
Size: Minimum diameter 80mm
Weight: 18g / pr



ATL-21305

Spec: Steel core tire lever 3pcs set
Weight: 97g / set



ATL-2001

Spec: Tool box with 19 most common tools
Size: Adjustable BB cup tool
15/16 & 15/17 pedal wrench
Cartridge BB tool
6" adjustable forged steel wrench
3 steel & 3 nylon tire levers
BB & headset locking tool
Chain rivet extractor & assembler
M8 hex wrench for crank arm removal & 1/2" adapter
Inner tube repair kit
Philip & flat screw drivers
Freewheel remover
8 x 10mm open wrench
Sprocket wrench
30/32/36/40mm 4-in-1 headset wrench
13/14/15/16mm hub-cone wrenches
Cotterless crankarm extractor
7-groove spoke adjuster
2/2.3/3/4/5/6mm hex wrench set
Weight: 2800g



ATL-21501

Spec: Nylon trouser bands with Velcro and 3M reflector
Size: 20 x 350mm
Weight: 16g / pr



ATL-21605

Spec: POM tire lever 3pcs set
Weight: 53g / set



ATL-21101

Spec: Multi-purpose tool kit
Size: Nylon fiber tire lever 2pcs
Folding tool kit with 2 / 2.5 / 3 / 4 / 5 / 6mm Allen keys
Tire patch set, chain remover, O spoke adjuster,
8 / 10mm spanner
Weight: 558g / box



ATL-2804

Spec: Torque wrench in durable hard steel box
Adjustable by twisting the grip
Range 2-24 Nm
Size: Allen keys 3 / 4 / 5 / 6 / 8 / 10mm & T25 torx
5mm Allen key extension, Torque key
Weight: 620g / box



ATL-21114

Spec: Alloy spoke wrench 3pcs set
0.127", 0.130", 0.136"
Weight: 20g



ATL-2901

Spec: 15 Function Mini tool kit
Size: Allen keys: 2 / 2.5 / 3 / 4 / 5 / 6 / 8mm
Spoke wrenches: 14G / 15G, 0.136", 0.156"
Philip & flat screw driver
Tire lever, 10mm wrench, knife
Weight: 119g



ATL-21112

Spec: 17 Function Mini tool kit
Size: Allen keys: 2 / 2.5 / 3 / 4 / 5 / 6 / 8mm
Spoke wrenches: 14G / 15G, 0.136", 0.156"
Philip & flat screw driver, T25 torx
Chain tool for 9 / 10 SPD, 8 & 10mm wrenches
Weight: 168g



ATL-21603

Spec: 11 Function Mini tool kit with plastic case
Size: 1.5 / 2 / 2.5 / 3 / 4 / 5 / 6 / 8mm Allen keys
T10 / 20 / 25 wrenches
Weight: 158g



ATL-2510

Spec: Ergonomic T-bar 8pcs Hex wrench set with storage stand
Size: 2 / 2.5 / 3 / 4 / 5 / 6 / 8 / 10mm
Weight: 1062g

- A ditto 2mm
- B ditto 2.5mm
- C ditto 3mm
- D ditto 4mm
- E ditto 5mm
- F ditto 6mm
- G ditto 8mm
- H ditto 10mm



ATL-2304

Spec: 19 Function Mini tool kit
Size: Allen keys: 2 / 2.5 / 3 / 4 / 5 / 6 / 8mm
Box wrenches: 8 / 9 / 10 / 12mm
Spoke wrenches: 0.127 / 0.130 / 0.136"
Philips & flat screw drivers
Tire lever, chain breaker, knife
Weight: 206g



ATL-21604

Spec: 19 Function Mini tool kit with alloy arm
Size: 2 / 2.5 / 3 / 4 / 5 / 6 / 8mm, L-type 2 / 2.5 / 3mm Allen keys
NP, Philip & flat screw driver, Box wrenches 8 & 10mm
Caliper spreader with MAVIC MTB 3.22
Bottle opener with 3.2 & 3.4mm spoke wrenches
Weight: 190g



ATL-2405

Spec: Magnetic spoke wrench compact 3-way
Cr-Mo spoke key
Compatible with 3.2, 3.3, 3.45mm nipples
Weight: 47g



ATL-2621

Spec: 9pcs L type Hex wrench set
With ball head for hard to reach bolt heads
Size 1.5 / 2 / 2.5 / 3 / 4 / 5 / 6 / 8 / 10mm with plastic holder
Weight: 323g



ATL-2621C

Spec: 9pcs L type Hex wrench set with colorful design
With ball head for hard to reach bolt heads
Size 1.5 / 2 / 2.5 / 3 / 4 / 5 / 6 / 8 / 10mm with plastic holder
Weight: 323g



ATL-21404

Spec: Hardened Cr-Mo steel Inner cable puller
To tighten inner brake/shift cables, with a thumb lock to hold the setting, leaving your hands free to tighten fixing nuts and bolts.
Weight: 240g



ATL-2711

Spec: Hardened steel core cable cutter
Suitable for cutting cables or outer casings
Closing clip for safe storage
Weight: 157g



ATL-2604

Spec: L type Hex wrench
Size 8mm x L200mm
Weight: 111g



ATL-2610

Spec: Chain whip tool
Holds the sprockets in place when removing cassette lock-ring
Size 290mm
Weight: 276g



ATL-2607

Spec: 3 in 1 Y type allen key tool
Size: 4 / 5 / 6mm
Weight: 70g



ATL-2608

Spec: 3 in 1 Y type socket tool
Size: 8 / 9 / 10mm
Weight: 82g



ATL-2710

Spec: Ergonomic T-bar torx wrench
Size T25 x L100mm
Weight: 32g



ATL-2611

Spec: Durable Nylon with bristles scrub brush
Size For derailleur, chain or any parts where get dirt
Weight: 31g



ATL-2803

Spec: Chain wear indicator tool
Easy to use chain wear checker indicates when the 0.75% or 1% wear is reached. At which means the chain should be replaced.
Size: 140 x 48mm
Weight: 36g



ATL-2609

Spec: Chaining nut wrench tool
Compatible with Shimano and Campagnolo chaining nuts
One side for chaining and another side for self-extracted crank cover
Size: L100mm
Weight: 20g



ATL-2612

Spec: Chain cleaner with plastic outer case
4-sided scrub brushes inside
Weight: 267g



ATL-2702

Spec: Chain link extractor tool
Chain braker tool compatible with most chains
Weight: 89g



ATL-21103

Spec: Hollowtech II bottom bracket tool
Fits Shimano Hollowtech II and SRAM GXP type
Size: L240mm
Weight: 402g



ATL-2713

Spec: Hollowtech II bottom bracket / crank tool
Fits Shimano Hollowtech II and SRAM GXP type
Size: L252mm
Weight: 242g



ATL-2620

Spec: Cartridge bottom bracket tool
Fits Square Taper, ISIS drive, Shimano Octalink type
Size: 242mm
Weight: 307g



ATL-2715

Spec: ISIS / Octalink crank remover tool
Suitable for ISIS, Octalink splined axles
Includes 8mm hex for removing axle bolts
Size: L234mm
Weight: 283g



ATL-2712

Spec: Disc rotor truing tool
Tool for straightening bent disc rotors. The perfect problem solver when a replacement rotor is not available.
Weight: 223g



ATL-2613

Spec: 15mm open wrench for pedal axle
Size: L234mm
Weight: 183g



ATL-21403

Spec: Cone wrench
Size: 13 / 14 / 15 / 16 / 17 / 18mm, L207mm
Weight: 185g



ATL-2714

Spec: Campagnolo cassette locking remover
Removes the lock-ring off Campagnolo compatible cassettes
Size: L234mm
Weight: 228g



ATL-2614

Spec: Shimano HG cassette locking remover
Removes the lock-ring off Shimano compatible cassettes and centre lock disc brake hubs
Size: L234mm
Weight: 228g





ACORPLUS

BOTTLE CAGE / FORKS / HANDLEBARS / STEMS
SEATPOSTS / WHEELSETS

ACORPLUS PRODUCT FEATURES

The concept of ACORPLUS products stick on the topic: Affordable luxury. We use carbon fiber's unique strength to engineer from inside out and make it reliable under test. And using black and white combined elements to highlight the carbon fiber material from outside in. We expect the ACORPLUS that gives you the most comfortable experience in technology, psychology and economics.

THE STORY

Acor are committed to offer all cycling parts and accessories for more than 25 years. We are thinking what we can do and what should do for next decades. Continuing the experience and spirit, we create ACORPLUS series in 2014 to meet those riders who pursue profession and craft. You are allowed to upgrade your bike anytime and do not forget that ACORPLUS always be with you, this is our promise.

A + *A* = **A**

BOTTLE CAGE

APBG-21801

Spec: Carbon fiber UD finish bottle cage
Classic design for road bike
Easily take in & out for slope design
Weight: 26g



APBG-21802

Spec: Big dia. Carbon fiber UD finish bottle cage
Fits the dia. 73 up to 77mm
With four lock hold could change the lock position easily, even small frame
Weight: 20g



APBG-21803

Spec: Carbon fiber UD finish bottle cage
Columnar design easy take in & out
Weight: 30g



STEMS

APSM-21801

Spec: Carbon fiber UD finish stem
Ergonomic and monocoque design
Steerer: 28.6mm
Barbore: 31.8mm
Length: 80-120mm for options
Angle: +/- 6°
Weight: 105g



SEAT POSTS

APSP-21801

Spec: Full Carbon fiber UD finish seatpost
2 bolts and monocoque design
Size: 27.2 / 31.6 x 350mm
Offset: 0 mm
Weight: 175g (31.6mm)



APSP-21802

Spec: Full Carbon fiber UD finish seatpos
1 bolts and monocoque design
Micro angle adjustable
Size: 27.2 / 31.6 x 350mm
Offset: 30 mm
Weight: 175g (31.6mm)



HANDLEBARS

APHB-21801

Spec: Carbon fiber UD finish road bar
Ergonomic design for multi-direction
Internal routing of brake & derailleur cables
Width: 380 / 400 / 420mm (C-C)
Barbore: 31.8mm
Reach: 78mm
Drop: 125mm
Weight: 250g (380mm)



APHB-21802

Spec: Carbon fiber UD finish flat bar
Ergonomic and monocoque design
Sui for city and MTB bikes
Width: 680 / 700 / 720mm
Barbore: 31.8mm
Backsweep: 6°
Upsweep: 0°
Weight: 185g (720mm)



APHB-21803

Spec: Low rise Carbon fiber UD finish rise bar
Ergonomic and monocoque design
The low rise making it suitable for 29ers or onger-travel bikes with high front ends.
Width: 700 / 720mm
Rise: 15mm
Barbore: 31.8mm
Backsweep: 9°
Upsweep: 4°
Weight: 175g (720mm)



APHB-21804

Spec: Carbon fiber UD finish rise bar
Ergonomic and monocoque design
Multi width options suit for all types of MTB bikes and height of person
Width: 700 / 720 / 740 / 760 / 780 / 800mm
Rise: 16mm
Barbore: 31.8mm
Backsweep: 9°
Upsweep: 4°
Weight: 220g (800mm)



FORKS

APFK-21801

Spec: 700C Full Carbon fiber Monocoque road fork
1-1/8"-1-1/2" tapered steerer
45mm offset
370mm Crown height
Weight: 400g



APFK-21601

Spec: 700C Full carbon Monocoque road fork
1-1/8" to 1.5" tapered steerer
15mm thru axle dropout OLD 100mm
SHIMANO Flat Mount disc system
Internal cable routing, with fender eyelets
12 or 15mm Thru axle included
Weight: 475g (without axle)



APFK-21602

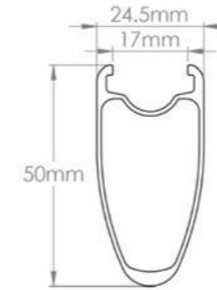
Spec: 27.5" Plus Full carbon Monocoque MTB fork
1-1/8" to 1.5" tapered steerer
15mm thru axle dropout
Internal cable routing
15mm Thru axle included
Weight: 700g (without axle)



WHEELSETS

APRM-21801

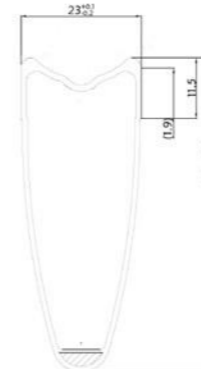
Spec: Full Carbon fiber UD finish wheelset
Including brake pads / extension valve / QR
Rim type: 700C Tubeless Ready Clincher
Rim height: 50mm
Spoke: F20 / R24
Hub: F 9mm QR OLD:100mm
R 10mm QR SHIMANO 11SPD body OLD:130mm
Weight: 660g (F) + 850g (R), total 1510g



The ACORPLUS all roads wheelset select highest carbon fiber rims with EU test, all the components carefully selected and assemble by trained builders in Taiwan. No matter you are seeking speed through aerodynamic advantage, routine climbing training or lighten your bicycle. The all roads collection offers you the widest assortment of quality carbon wheels to complete your quest for the ultimate ride.

APRM-21802

Spec: Full Carbon fiber UD finish wheelset
Including brake pads / extension valve / QR
Rim type: 700C Tubular
Rim height: 60mm
Spoke: F20 / R24
Hub: F 9mm QR OLD:100mm
R 9mm QR SHIMANO 11SPD body OLD:130mm
Weight: 635g (F) + 810g (R), total 1445g



AGENT LIST



HUNGARY

J.P Mali Ltd

TEL: +36 1 420 5032
E-Mail: mali@mali.hu
<http://www.mali.hu>



COLOMBIA

LIBAR S.A.S

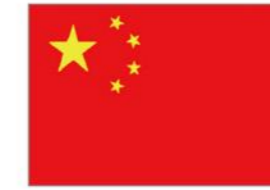
TEL: +57 1 4851 211
E-Mail: alievanoventas@libarbicicletas.com



AUSTRIA

BBF BIKE GmbH

TEL: +49 3342 354360
E-Mail: info@bbf-bike.de
<http://www.bbf-bike.de>



CHINA

Beijing Yu Tai Hang Lun Sports

TEL: +86 10 69278755
E-Mail: sales@tibicycle.com
<http://www.tibicycle.com>



CROATIA

Marko-Projekt

TEL: +385 1 4618 777
E-Mail: zdravko.bukarica@zg.htnet.hr
<http://www.markoprojekt.com>



ITALY

BBF BIKE GmbH

TEL: +49 3342 354360
E-Mail: info@bbf-bike.de
<http://www.bbf-bike.de>



JAPAN

Action Sports

TEL: +81 48 2587811
E-Mail: acor@actionsports.co.jp
<http://www.actionsports.co.jp>



POLAND

BBF BIKE GmbH

TEL: +49 3342 354360
E-Mail: info@bbf-bike.de
<http://www.bbf-bike.de>



CZECH REPUBLIC

Velo CZ s.r.o

TEL: +420 495 271 379
E-Mail: info@wheeler.cz
<http://www.wheeler.cz>



ROMANIA

J.P. Mali Ltd.

TEL: +36 1 420 5032
E-Mail: mali@mali.hu
<http://www.mali.hu>



GERMANY

BBF BIKE GmbH

TEL: +49 3342 354360
E-Mail: info@bbf-bike.de
<http://www.bbf-bike.de>



SLOVAKIA

AGF Invest s.r.o

TEL: +421 2 62 85 95 49
E-Mail: stefan.puhovich@agfinvest.sk
<http://www.agfinvest.sk>



HONG KONG

SUN HOP CYCLE CO.

TEL: +852 23966581
E-Mail: sunhop@biznetvigator.com
Facebook: Sun Hop Cycle Co



THAILAND

ASIA BIKE

TEL: +66 2 887 7813
E-Mail: info@asiabike.com
<http://www.asiabike.com>



UNITED KINGDOM

Greyville Enterprises Ltd.

TEL: +44 1 543 251328
E-Mail: sales@greyville.com
<http://www.greyville.com>